



# Intelligent SMS connection for Microsoft Exchange

## Built on Proha Mobile Workflow Manager™ platform

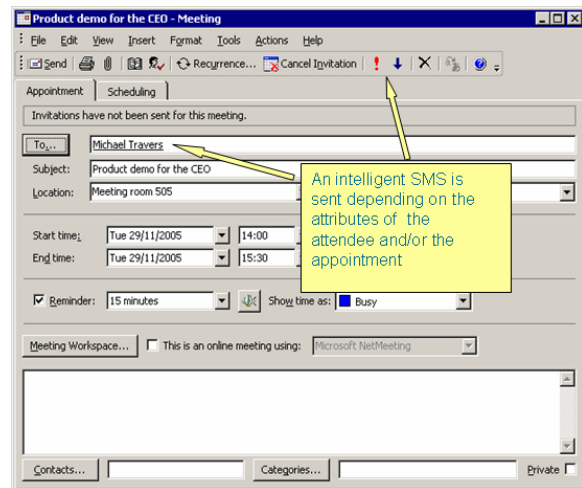
**Mobile WorkFlow Manager™ solution to Microsoft Exchange Server 2000/2003 (Microsoft Office Outlook) will enable meeting request and accept/decline process with Intelligent SMS technology.**

Mobile WorkFlow Manager Solution transforms information and messages from the companies' ERP, project management, mail- and workgroup servers and/or customer processes safely and automatically between operative systems and end-users.

BookIT DDM (Dynamic Dialogue Matrix™ ) intelligent SMS technology enhances the global standard SMS infrastructure with a unique Intelligent SMS business transaction capability. It includes session management and automatic secure authentication to enable easy-to-use and secure transactions between applications and mobile phones.

### FUNCTIONAL DESCRIPTION

1. The Organizer creates a new meeting as normally done with Microsoft Office Outlook. During process the Organizer indicates if invitation should be sent by Intelligent SMS. Microsoft Exchange can also make this decision automatically depending on the attributes and/or the contents of the meeting.

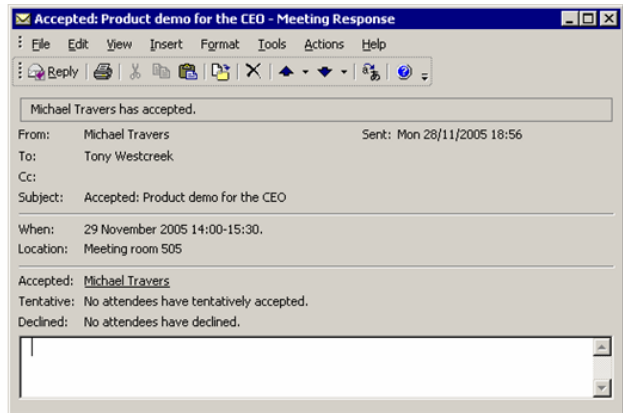


2. Attendees will receive an email and also if parameters match - an Intelligent SMS. Participants can accept/decline participation to the meeting with a simple one letter SMS reply.

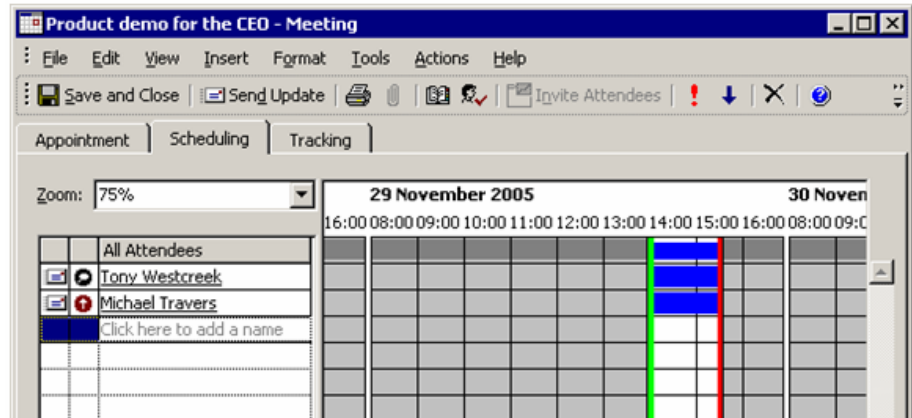




- When the attendees reply to the Intelligent SMS, a standard email notification will be added to the meeting and also sent to the Organizer.



- Calendar is updated after arrival of acceptance.



- If meeting is cancelled, notification can be sent to all participants by SMS (in addition with standard email).

Deployment phase is very flexible. New functionality can be deployed in specific or all mailboxes. In addition usage of intelligent SMS will be operated according specific rules. These two possibilities will be combined based on customer needs.

## SYSTEM REQUIREMENTS

Mobile WorkFlow Manager and database (SQLserver 2005) to a specified server.

Mobile WorkFlow Manager Exchange connector, which contains a dll-file connected to desired mailboxes. Connector is asynchronous and based on Microsoft's standard EventSink protocol.

BookIT DDM server connection.

SMTP-protocol enabled towards Microsoft Exchange server.

Http and https protocols must be enabled between Mobile WorkFlow Manager and DDM server.